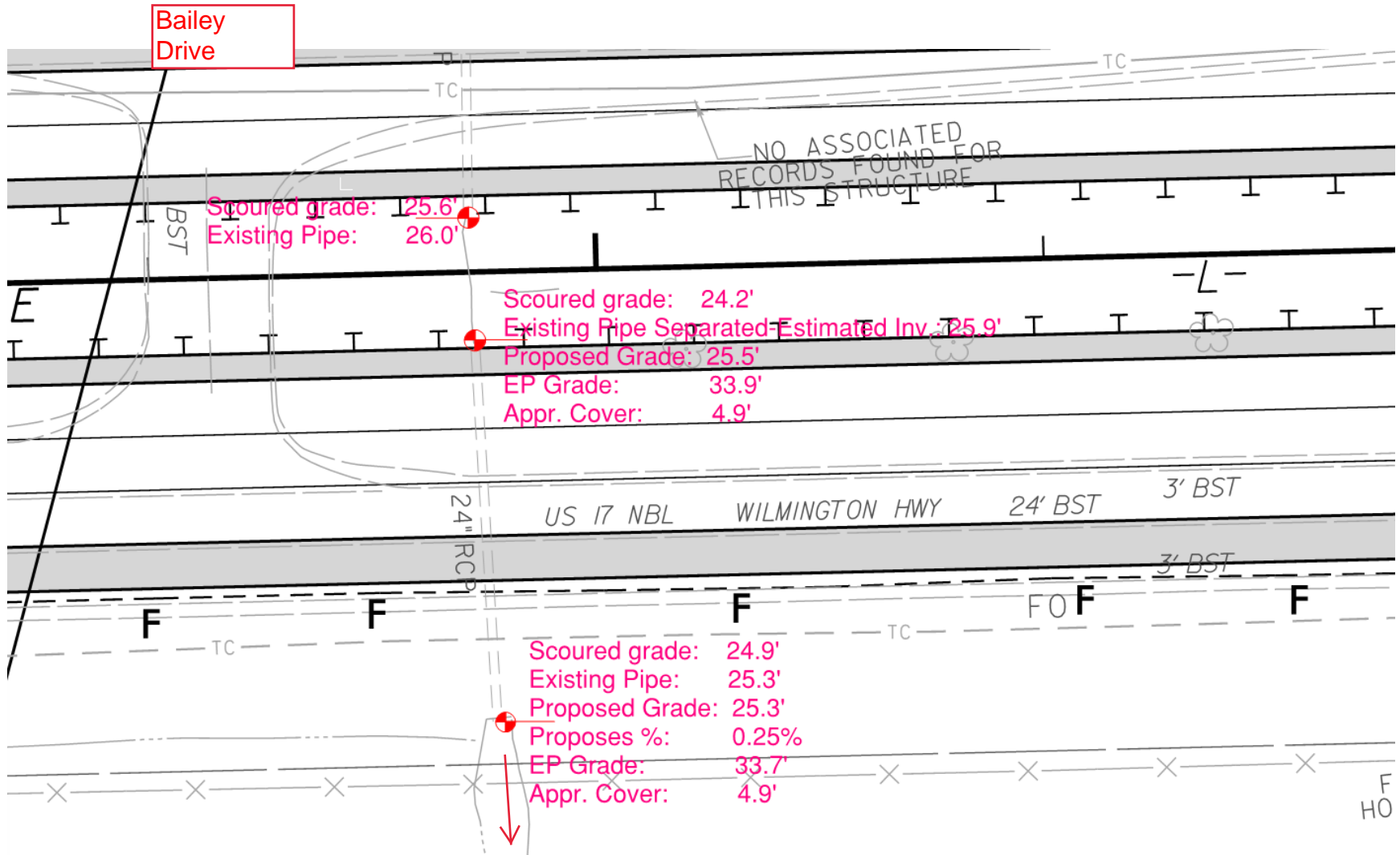


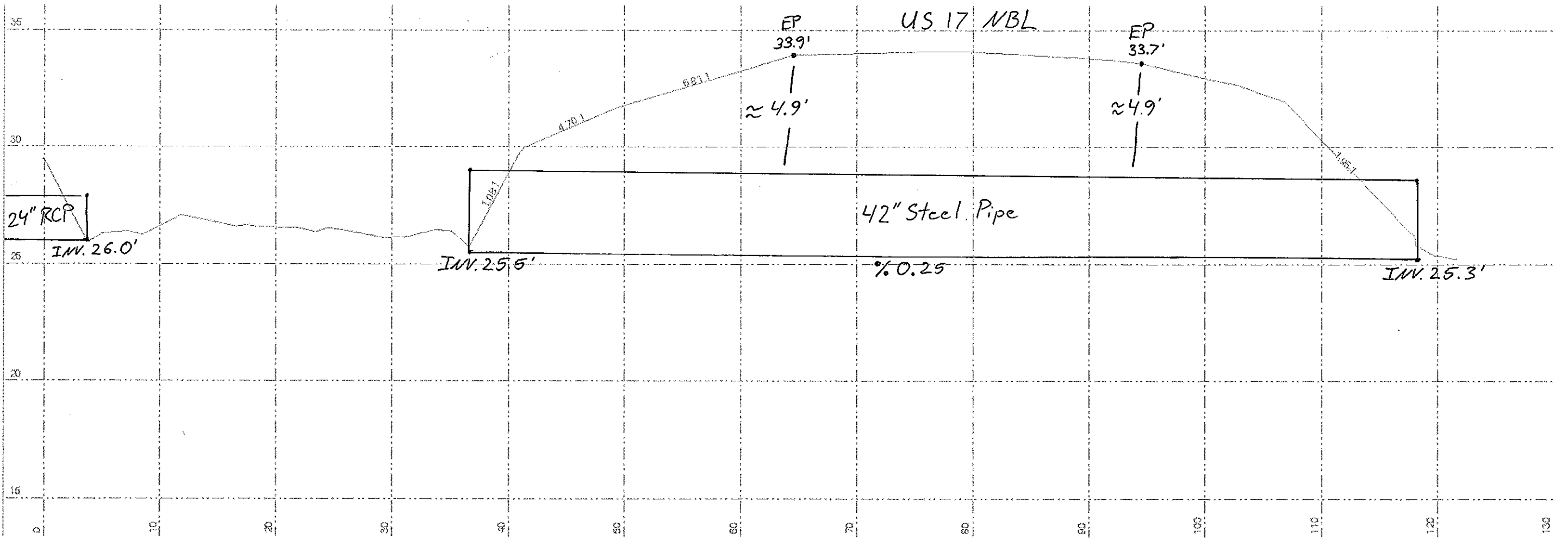
US 17 North Bound 50 Ft north of Bailey Drive
34.726304, -77.475535

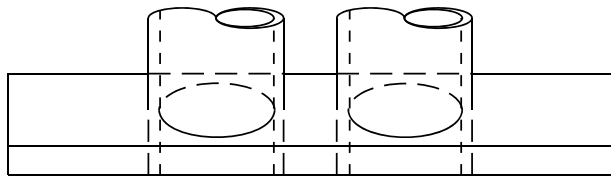


1. Offset new 42" pipe minimal distance from existing 24" RCP pipe, as to allow for jack and bore construction. 84" offset max from center of each pipe.
2. Shoulder closures will be required on each side of the North bound lane during this operation. Water-barrier is shown on the west side. Lane closure will be required on the East Side when equipment and personal are working within 5' of through lanes. Lane Closure restrictions are : No Lane Closures 5am to 9am and 3pm to 6pm.
3. Grading and minor ditching will be required at inlet and outlet of new 42" pipe.
4. Headwall will be constructed on inlet side using Std 838.01

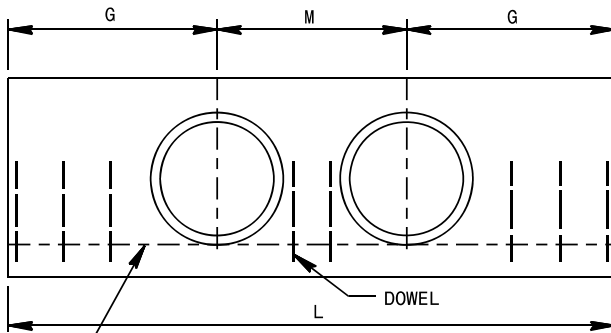
This sheet from future U-5735 Intersection Project - EXISTING CONDITIONS FOR REFERENCE ONLY



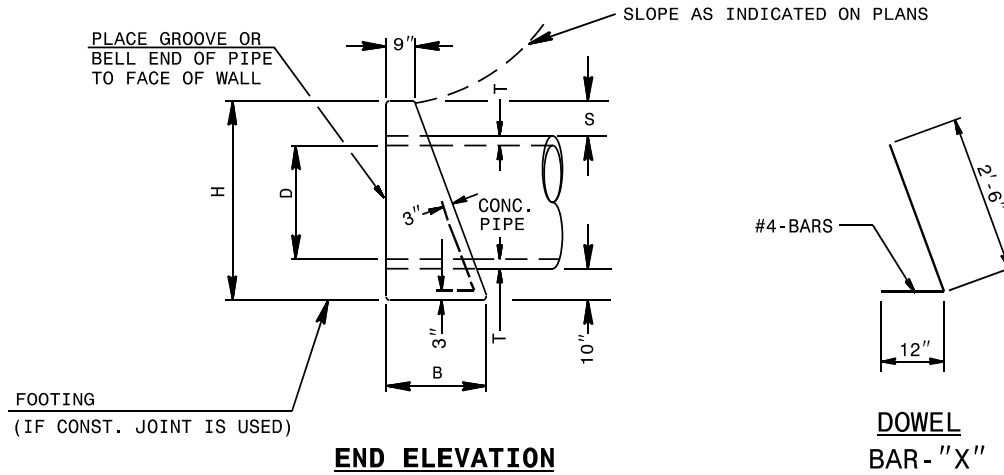




PLAN



ELEVATION

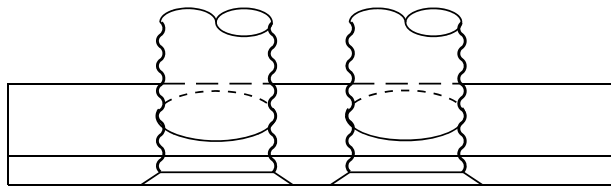


END ELEVATION

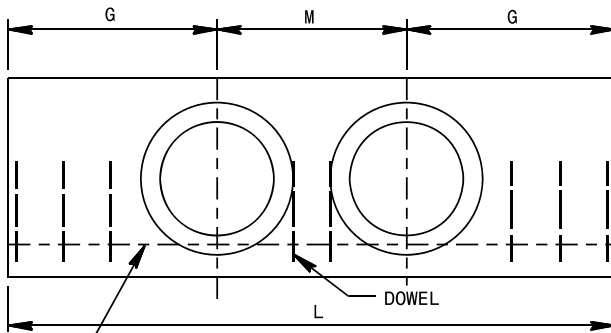
DOWELS IN ENDWALL WITH REINFORCED CONCRETE PIPE																			
LOC.	PIPE DIA.	SINGLE PIPE							DOUBLE PIPE										
		15"	18"	24"	30"	36"	42"	48"	15"	18"	24"	30"	36"	42"	48"				
	BARS	"X"	"X"	"X"	"X"	"X"	"X"	Y*	"X"	Y*	"X"	"X"	"X"	"X"	"X"	Y*	"X"	Y*	
G	QTY.	2	2	3	3	4	4		5		2	2	3	3	4	4		5	
M	QTY.	-	-	-	-	-	-	2	-	2	1	1	2	2	2	2	2	3	2
G	QTY.	2	2	3	3	4	4		5		2	2	3	3	4	4		5	
TOTAL LBS.		9	9	14	14	19		55		65	12	12	19	19	23	77		92	

DIMENSIONS AND CONCRETE QUANTITIES										
USING CONCRETE PIPE										
D	H	B	COMMON DIMENSIONS			SINGLE PIPE		DOUBLE PIPE		
			G	T	S	L	YD ³	M	L	YD ³
15"	3'-3"	1'-8"	2'-9"	2¼"	9½"	5'-6"	0.7	2'-2"	7'-8"	1.0
18"	3'-7"	1'-10"	3'-2"	2½"	10"	6'-4"	1.0	2'-7"	8'-11"	1.3
24"	4'-2"	2'-1"	4'-0"	3"	10"	8'-0"	1.5	3'-5"	11'-5"	2.0
30"	5'-0"	2'-6"	4'-7"	4¼"	11½"	9'-2"	2.3	4'-3"	13'-5"	3.1
36"	5'-8"	2'-8"	5'-6"	4¾"	11½"	11'-0"	3.4	5'-0"	16'-0"	4.5
42"	6'-2"	3'-1"	6'-4"	5¼"	11½"	12'-8"	4.5	5'-10"	18'-6"	6.0
48"	6'-9"	3'-5"	7'-2"	5¾"	11½"	14'-4"	6.0	6'-8"	21'-0"	8.0

*SEE SHEET 3

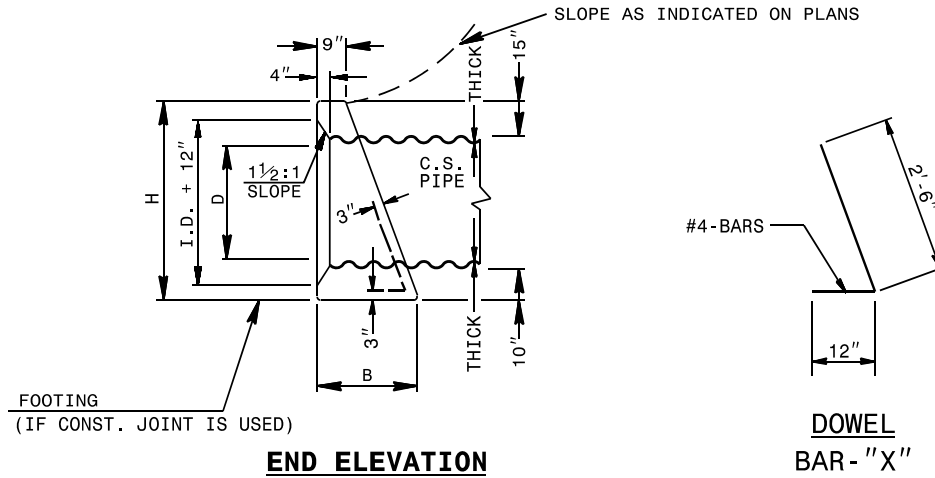


PLAN



ELEVATION

OPTIONAL CONSTRUCTION JOINT



END ELEVATION

**DOWEL
BAR - "X"**

DOWELS IN ENDWALL WITH C. S. PIPE																			
LOC.	PIPE DIA.	SINGLE PIPE								DOUBLE PIPE									
		15"	18"	24"	30"	36"	42"	48"	15"	18"	24"	30"	36"	42"	48"				
	BARS	"X"	"X"	"X"	"X"	"X"	"X"	Y*	"X"	Y*	"X"	"X"	"X"	"X"	"X"	Y*	"X"	Y*	
G	QTY.	2	2	3	3	4	4		5		2	2	3	3	4	4		5	
M	QTY.	-	-	-	-	-	-	2	-	2	1	1	1	2	2	2	2	2	2
G	QTY.	2	2	3	3	4	4		5		2	2	3	3	4	4		5	
TOTAL LBS.		9	9	14	14	19		53		62	12	12	16	19	23		73		85

DIMENSIONS AND CONCRETE QUANTITIES								
USING CORRUGATED STEEL PIPE								
	COMMON			SINGLE PIPE		DOUBLE PIPE		
D	H	B	G	L	YD ³	M	L	YD ³
15"	3'-4"	1'-8"	2'-6"	5'-0"	0.7	1'-11"	6'-11"	1.0
18"	3'-7"	1'-10"	2'-11"	5'-10"	1.0	2'-3"	8'-1"	1.2
24"	4'-1"	2'-1"	3'-8"	7'-4"	1.4	3'-0"	10'-4"	1.9
30"	4'-7"	2'-4"	4'-5"	8'-10"	2.0	3'-9"	12'-7"	2.7
36"	5'-1"	2'-7"	5'-2"	10'-4"	2.8	4'-6"	14'-10"	3.8
42"	5'-7"	2'-10"	5'-11"	11'-10"	3.8	5'-3"	17'-1"	5.0
48"	6'-1"	3'-1"	6'-8"	13'-4"	4.9	6'-0"	19'-4"	7.5

*SEE SHEET 3

GENERAL NOTES:

CHAMFER ALL CORNERS 1" OR HAVE A RADIUS OF 1".

PLACE 2 #6 "Y" BARS IN THE TOP OF ALL ENDWALL FOR PIPE CULVERTS 42" AND OVER WITH A MINIMUM OF 3" COVER AND A LENGTH OF 6" LESS THAN ENDWALL LENGTH.

CONSTRUCT BOTTOM SLAB WITH FORMS.

DO NOT INTERPRET WALL THICKNESS (T) SHOWN FOR THE THICKNESS ACCEPTABLE, BUT IS USED IN COMPUTING ENDWALL QUANTITIES.

WHEN THE CONTRACTOR ELECTS TO USE A CONSTRUCTION JOINT AT THE BOTTOM OF THE PIPE, PLACE BAR "X" DOWELS IN THE BASE AS SHOWN ON PLANS. SPACE BARS APPROXIMATELY ON 12" CENTERS UNLESS OTHERWISE DIRECTED BY THE ENGINEER.

WHEN THE CONTRACTOR ELECTS TO USE A CONSTRUCTION JOINT AT THE BOTTOM OF THE PIPE AND POUR THE BASE SEPARATELY LEAVE THE POUR ROUGH.

USE CLASS "B" CONCRETE.